
Basler Drivers Setup Guide

Contents

Install the Pylon drivers	2
Set the IP addresses for GigE-connected cameras	7
Launch the software	9
Launch the Pylon IP Configurator	9
Launch Nexus 2.5	11
Contact Vicon	12

© Copyright 2016 Vicon Motion Systems Limited. All rights reserved.

Vicon Motion Systems Limited reserves the right to make changes to information in this document without notice.

Companies, names, and data used in examples are fictitious unless otherwise noted. No part of this publication may be reproduced, stored in a retrieval system, or transmitted in any form or by any means, electronic or mechanical, by photocopying or recording, or otherwise without the prior written permission of Vicon Motion Systems Ltd.

Vicon® is a registered trademark of OMG plc. Vicon Blade™, Vicon Control™, Vicon Lock™, Vicon Lock+™, Vicon Nexus™, Vicon MX™, Vicon Pegasus™, Vicon Studio™, T-Series™, Vicon Tracker™, Vicon Vantage™, Vicon Vero™, and Vicon Vue™, are trademarks of OMG plc.

VESA® is a registered trademark owned by VESA (www.vesa.org/about-vesa/). Other product and company names herein may be the trademarks of their respective owners.

Vicon Motion Systems is an OMG plc company. Email: support@vicon.com Web: <http://www.vicon.com>

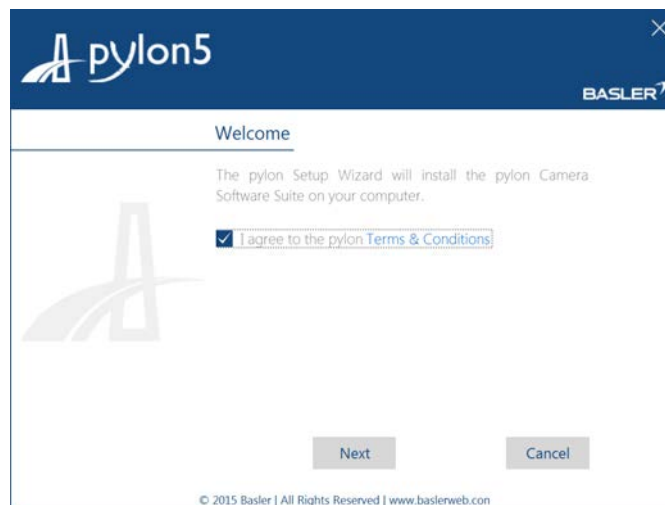
Install the Pylon drivers

Basler Pylon 5.0 and Windows 10/Nexus 2.5_v1.0_20160831

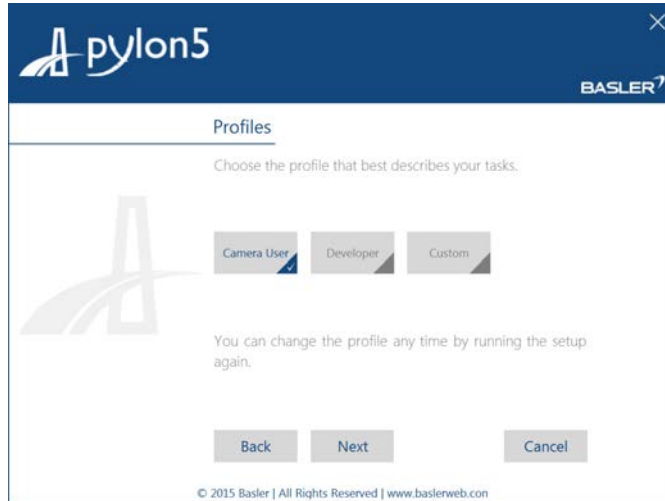
Install the .exe of choice.

- For the both Pylon IP Configurator AND the Pylon Viewer, run the Basler pylon 5.0.0.6150.exe
- For the Pylon Configurator only, run the Basler pylon Runtime 5.0.0.6150.exe.

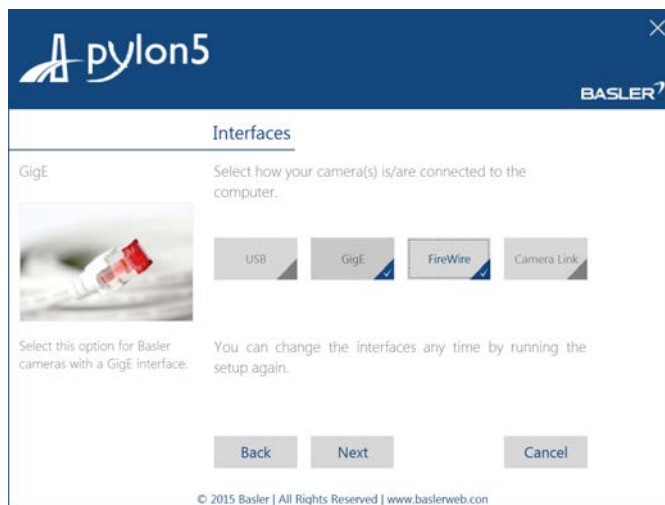
1. Agree to the Ts & Cs | Next



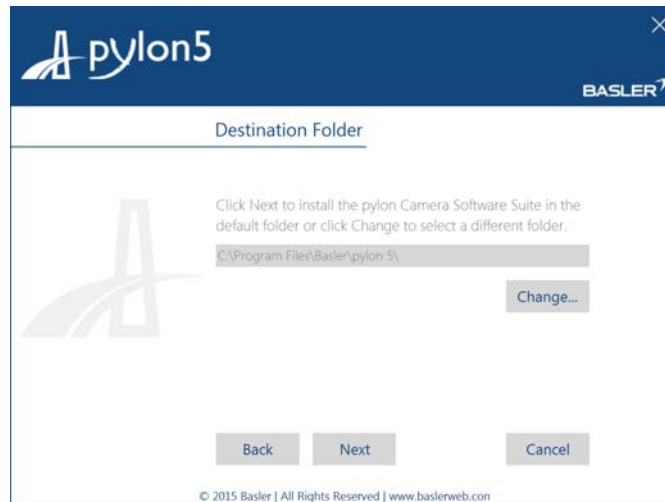
2. Select Camera User | Next



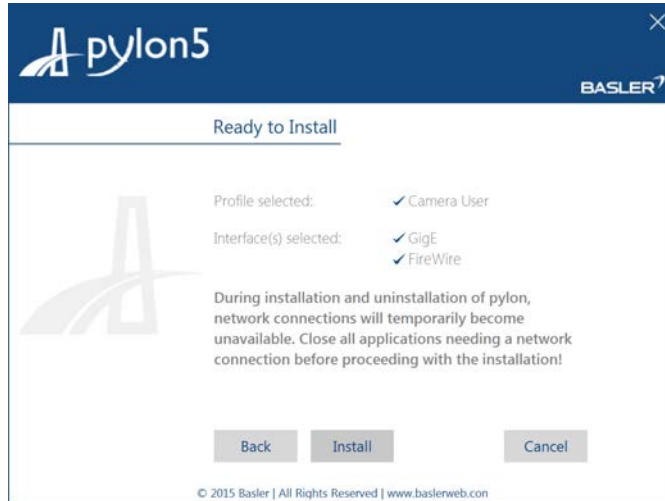
3. Select the Types of Cameras connected to the PC that you wish to install drivers for | Next



4. Accept (or alter) the destination folder for the installer | Next



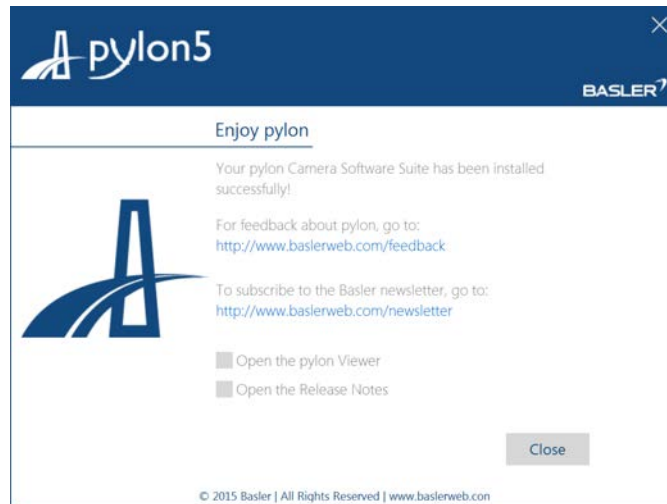
5. Click Install.



Installation in progress.....

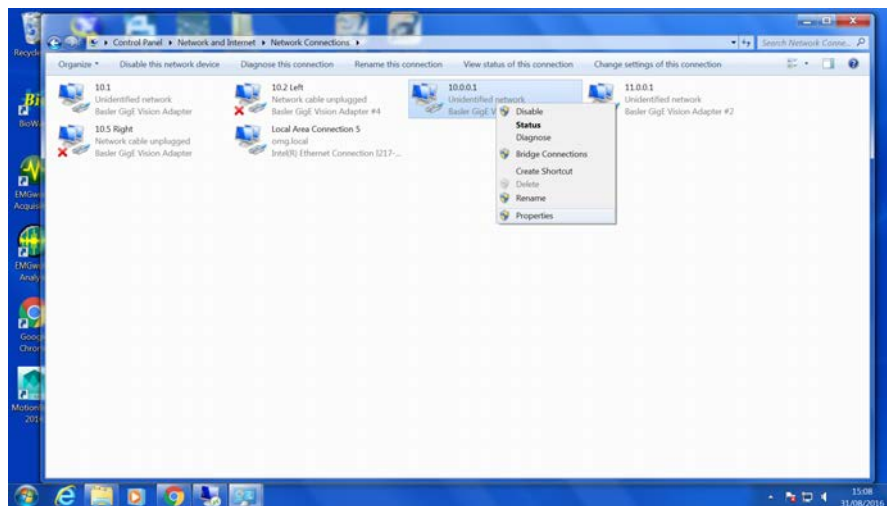


6. Click Close.



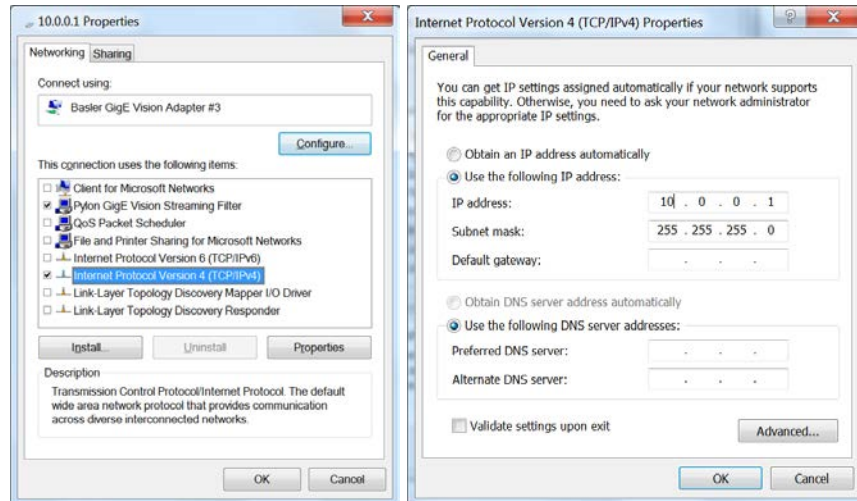
Set the IP addresses for GigE-connected cameras

1. Open Network and Sharing Centre | Change Adapter settings.
2. Right click the Adapter and select Properties



For GigE connected cameras, ensure the Pylon GigE vision Streaming Filter is checked, along with Internet Protocol Version 4.

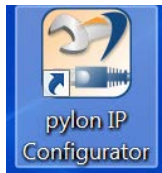
3. Change Internet Protocol v4 Properties to the desired IP Address (i.e. 10.0.0.1); Subnet Mask = 255.255.255.0



4. Repeat for other GigE connected devices (11.0.0.1; 12.0.0.1 etc).

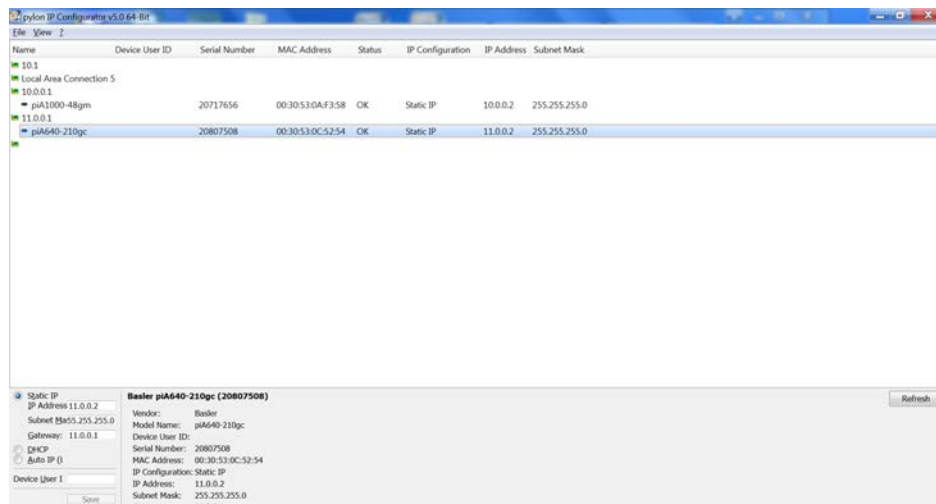
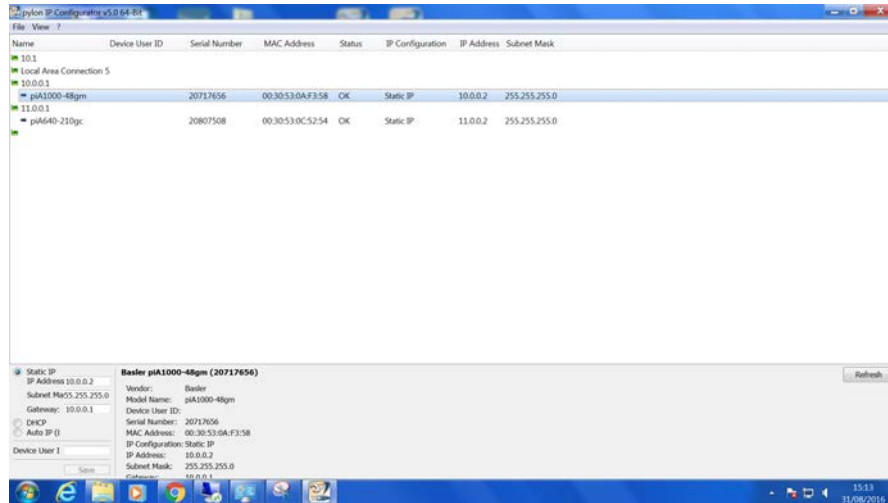
Launch the software

Launch the Pylon IP Configurator



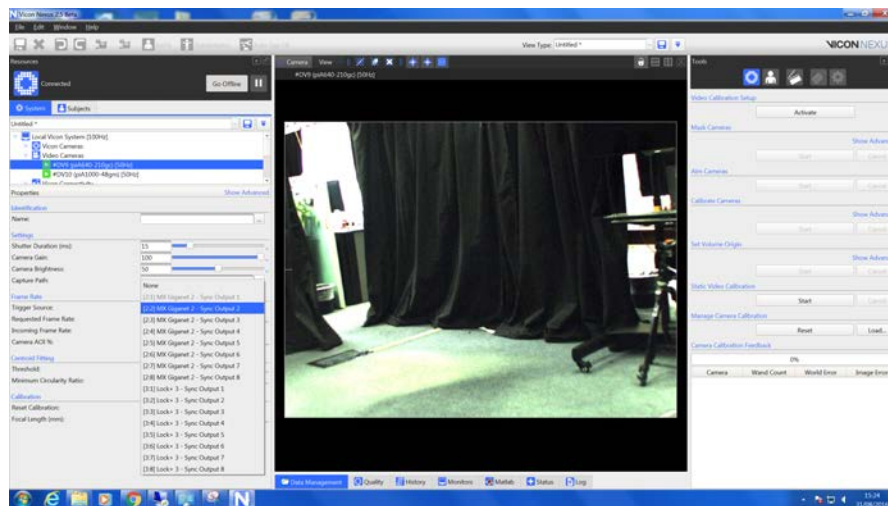
In the IP Config tool, ensure the IP Address is set to 1 Octet away from the IP Address of the NIC that the GigE camera is attached to.

Example: for the NIC address of 10.0.0.1, assign the Static IP of the camera to 10.0.0.2; (Subnet 255.255.255.0); Gateway to 10.0.0.1.



Launch Nexus 2.5

In Nexus assign the appropriate Trigger Source:



Contact Vicon

If you need more information than that supplied in the documentation or on the [Vicon Support web pages](#), please contact Vicon:

Denver, CO

Vicon Denver
7388 S. Revere Parkway, Suite 901
Centennial
CO 80112
USA
T:303.799.8686
F:303.799.8690
E: support@vicon.com

Oxford, UK

Vicon Oxford
14 Minns Business Park
West Way
Oxford
OX2 0JB
UK
T:+44.1865.261800
F:+44.1865.240527
E: support@vicon.com

Los Angeles, CA

Vicon LA
3750 S. Robertson Boulevard, Suite 100
Culver City
Los Angeles
CA 90066
USA
T:303.799.8686
F:310.388.3200
E: support@vicon.com

Singapore

Vicon Singapore
T:+65 6400 3500
E: support@vicon.com

© Copyright 2016 Vicon Motion Systems. All rights reserved.

