

# Vicon Data SDK - Getting Started with LabVIEW

---

This document outlines the use of the new Vicon Data SDK (.NET version dll) with National Instruments LabVIEW.

## LabVIEW Notes:

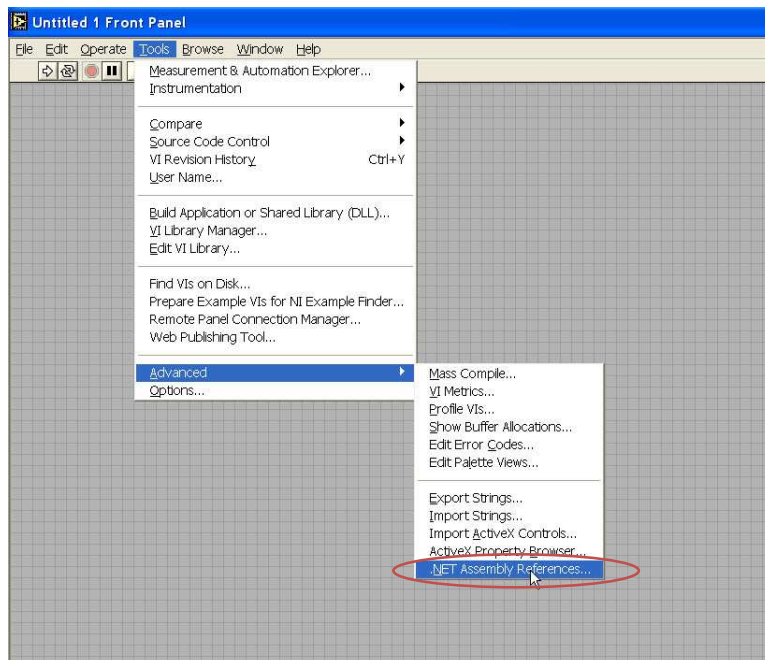
- DotNet Framework 2.0 or later must be installed on your system.
- Only LabVIEW Version 7.1 or higher will work with this SDK.
- The LabVIEW 1.1 patch should be installed on your system (updating version # to LabVIEW 7.1.1)
- The DS-SDK dll (*ViconDataStreamSDK\_DotNET.dll*) file must be in the same folder as your \*.vi files.



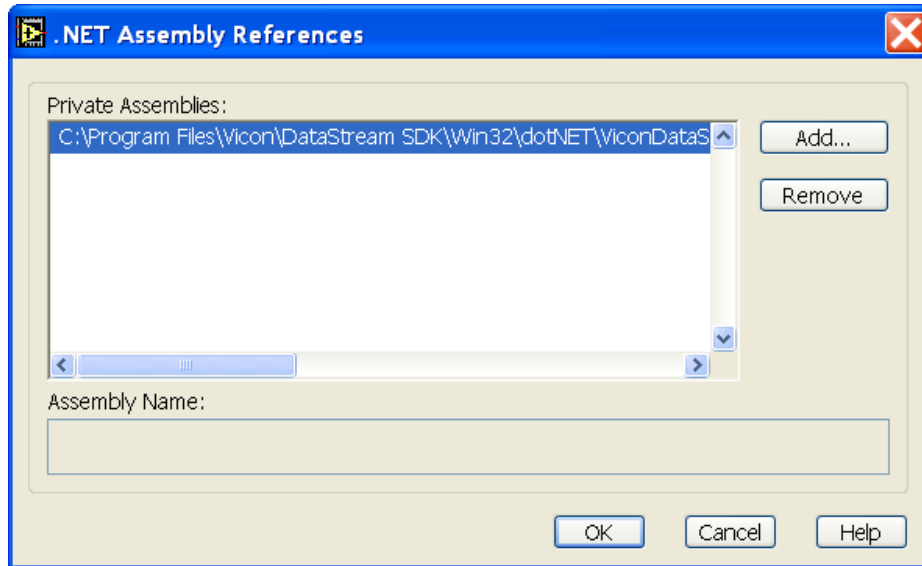
The Vicon Data SDK (.NET) has been tested with LabVIEW 7.1.1. If you have LabVIEW version 7.1 you should download and install the 7.1.1 patch. This has some updates that are necessary for vi's that interaction with .NET.

1. To use the SDK you must add a reference to this .NET assembly within LabVIEW. To accomplish this go to Tools – Advanced - .NET Assembly References. This menu may exist in a different location in your version of LabVIEW. Please refer to your LabVIEW manual or contact National Instruments support.

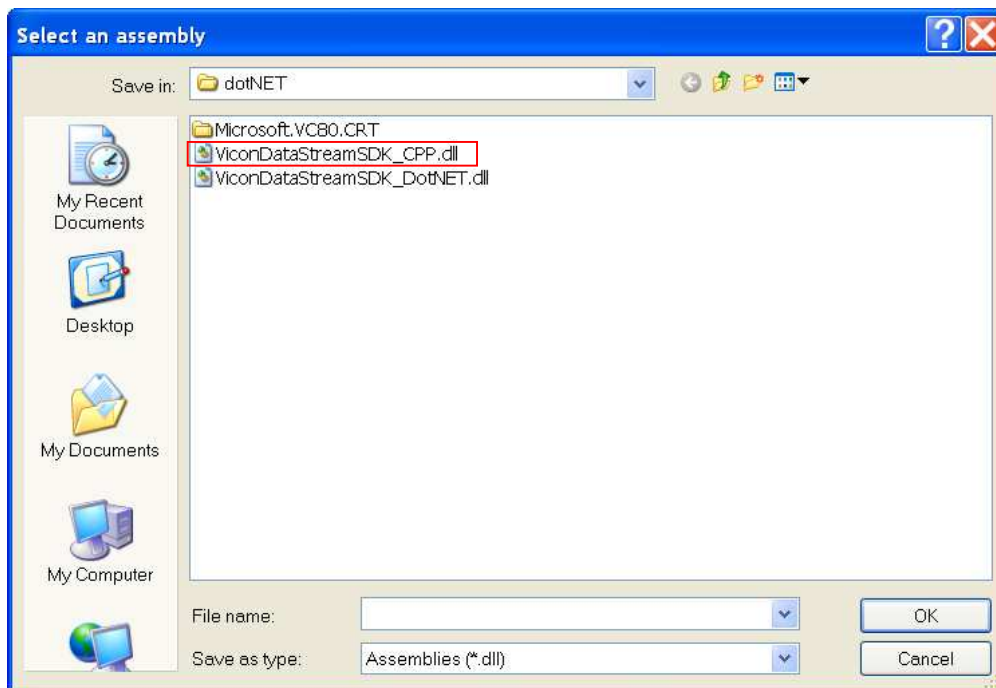
In LabVIEW 7.1.1 Tools → Advanced → .NET Assembly References



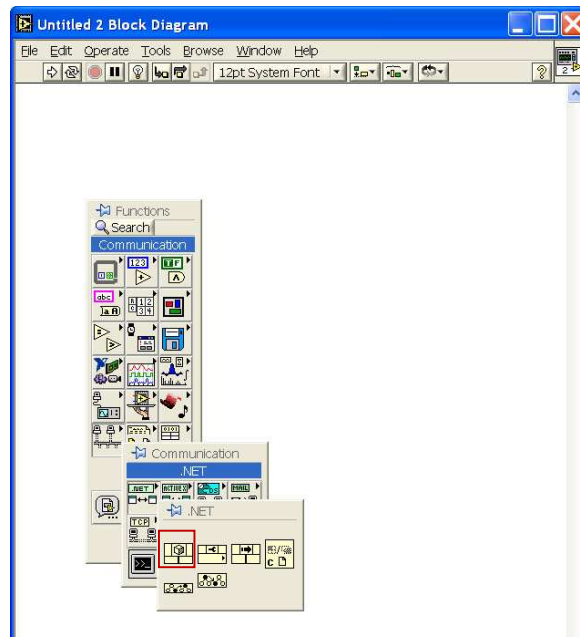
2. Browse to the directory where you have installed the ViconDataStreamSDK (default location C:\Program Files\Vicon\DataStream SDK\Win32)



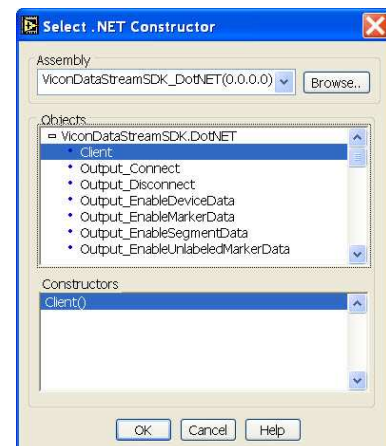
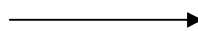
3. Select the .NET dll file: ViconDataStreamSDK\_DotNET.dll



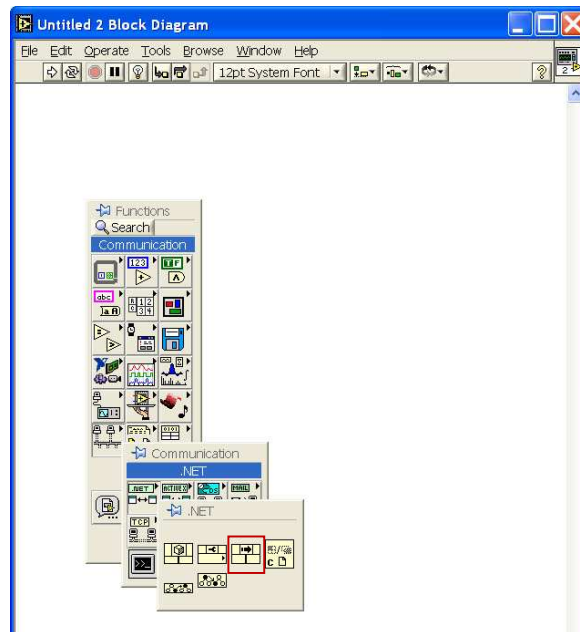
4. From the Communication → .NET pallet select a “.NET constructor node”



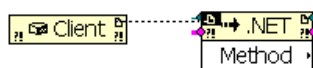
5. Open the .NET constructor node, brows to the .NET dll file and select **Client** as your constructor.



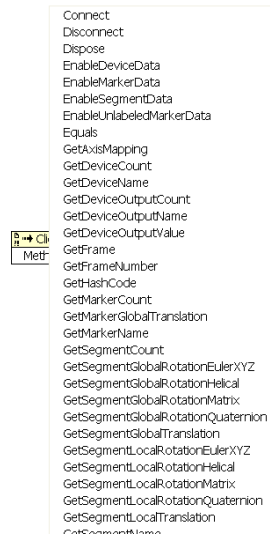
6. Select a .NET *Invoke* node to allow you to choose a dll function call.



7. Wire the *reference* from the constructor to the invoke node



8. Select the desired function call from the list



- To request a value from the function call that returns a value wire the invoke reference to a .NET *Property* node.

