

VICON \ N E X U S

Quick start guide for Blue Trident



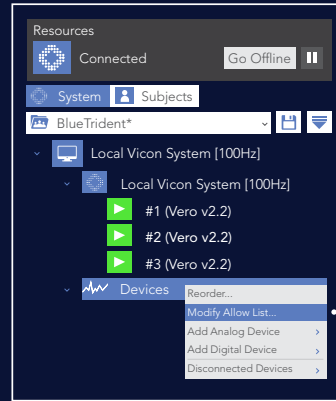
What's in the box?
Bluetooth® dongle
USB extender
IMU alignment clip
Beacon (optional)

Prepare your hardware

- 1 Ensure the Bluetooth® dongle is plugged into the PC and the drivers are up-to-date.
- 2 Ensure your Vicon IMUs are charged.



1. Connect sensors



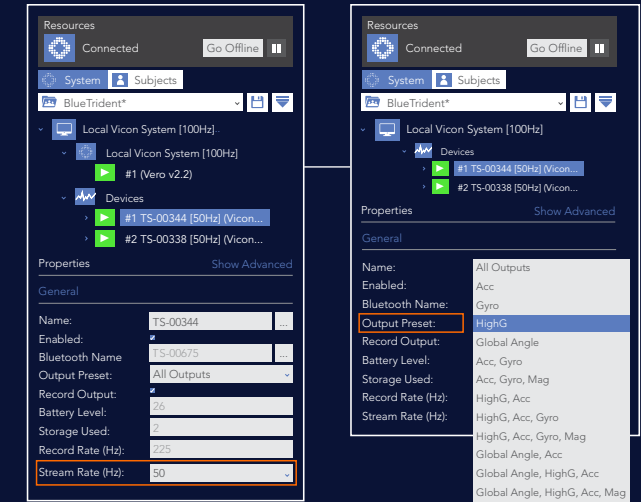
1 Start Nexus.

2 Specify the sensors that are detected by Nexus.

To do this, right-click **Devices** and then click **Modify Allow List**. Select the required sensors.

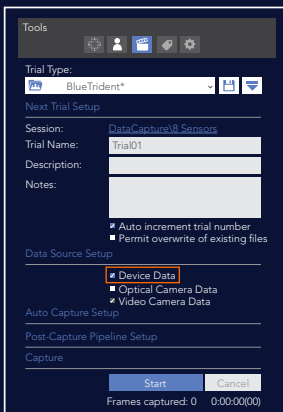
- 3 If needed, update sensor firmware to version 10.x or later with Capture.U Desktop (optional, see Capture.U User Guide <https://docs.vicon.com/display/IMU/>)

2. Stream live data



Set the desired **Stream Rate** and/or **Output Preset** (axes).

3. Capture Blue Trident data



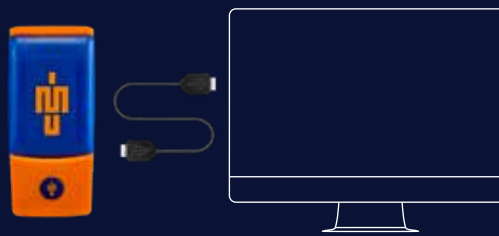
1 Go to the **Capture Tools** pane.

2 Enter the trial details.

3 Select **Device Data**. (in the **Data Source Setup** section)

- 4 To begin capturing click **Start**.
- 5 When finished click **Stop**. Streamed data is recorded and displayed as an .x1d file in **Data Management**.
- 6 To view streamed data load the x1d.

4. Connect the sensor(s) to the PC

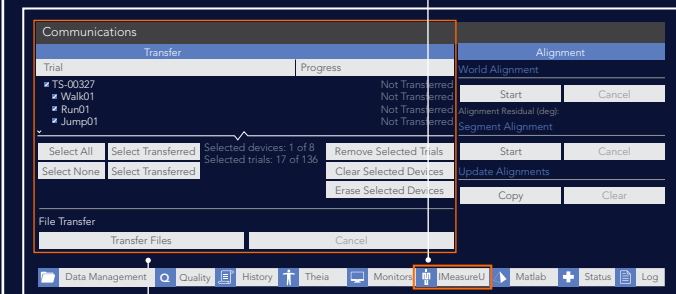


Connect the sensors to USB adapters and then to the PC via micro-USB cables.

5. Review trials to download

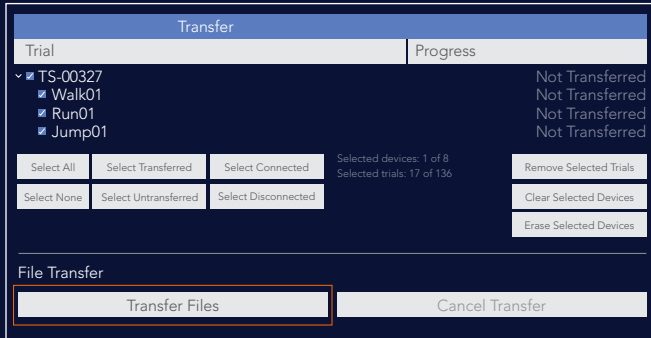
1 Go to the **Communications** pane.

2 Click the **IMeasureU** tab.



The **Transfer** pane displays a list of sensors and trials available to transfer.

6. Download Blue Trident data

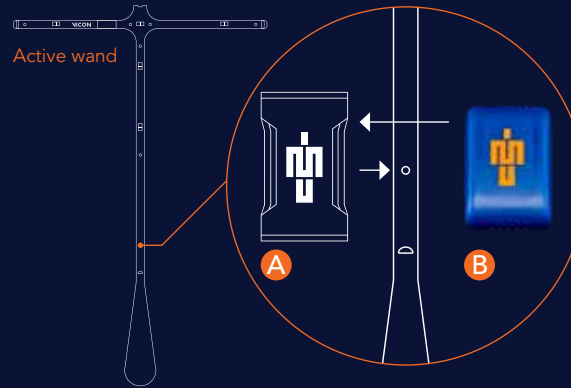


1 In the **Transfer** pane, select the required sensor and trials, and click **Transfer Files**.

2 After download from **Blue Trident** you can delete the data so you can free memory space
(see Nexus User Guide <https://docs.vicon.com/display/Nexus213>)

7. Align Blue Trident and Vicon Worlds

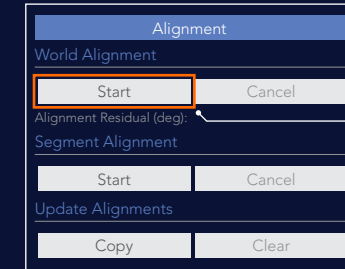
To align sensors to the Vicon world (optional), complete steps 7 to 11.



- 1 **Locate the hole** above wand handle.
- 2 With the IMU figure upright, **attach clip^(A)** to wand.
- 3 **Slide** the clip down so it sits securely in the hole.
- 4 **Insert** Blue Trident sensor^(B) into the clip^(A).

8. Align Blue Trident and Vicon Worlds (continued)

- 1 In the **System tree** expand the **Devices** node.
- 2 Select the sensor that is attached to the wand.
- 3 In the **Communications** pane, click the **IMeasureU** tab.



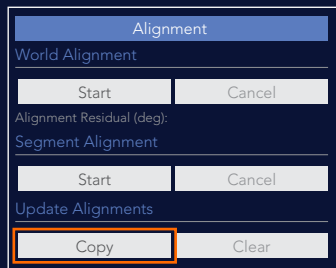
4 In the **Alignment** pane, under **World Alignment**, click **Start**.

- 5 Wave the wand in the capture volume for a few seconds.
- 6 Under **World Alignment** click **Stop**.

9. Align Blue Trident and Vicon Worlds (continued)

To align any/all other Blue Trident sensors

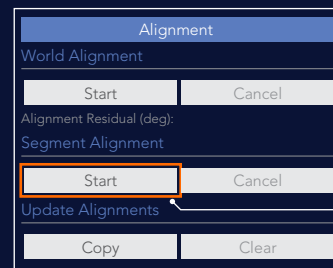
- 1 In the **System tree**, select the sensor that's now aligned with the Vicon world.
- 2 On the **IMeasureU** tab go to the **Alignment** pane.



3 Under **Update Alignments** click **Copy**. You can now attach this sensor to the required segment.

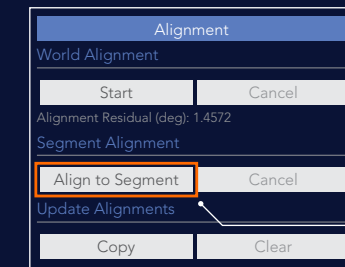
10. Align sensors with segments

- 1 In **Subjects Resources**, select the subject segment (e.g. Forearm).
- 2 To align the sensor, go to the **Alignment** pane.



3 Under **Segment Alignment**, click **Start**.

11. Align sensors with segments (continued)



1 Click **Align to Segment**.

- 2 For each sensor that you want to align to a segment, select the sensor, then repeat steps 10 and 11.

For regulatory information and other Blue Trident documentation, see the Vicon IMU documentation (<https://docs.vicon.com/display/IMU/>). Copyright © 2020–2022 Vicon Motion Systems Ltd. All rights reserved. Vicon® is a registered trademark of Oxford Metrics plc. IMeasureU is a trademark of IMeasureU Ltd in New Zealand. Other product and company names herein may be the trademarks of their respective owners. Vicon Motion Systems is an Oxford Metrics plc company. IMeasureU is a wholly owned subsidiary of Vicon Motion Systems Ltd.